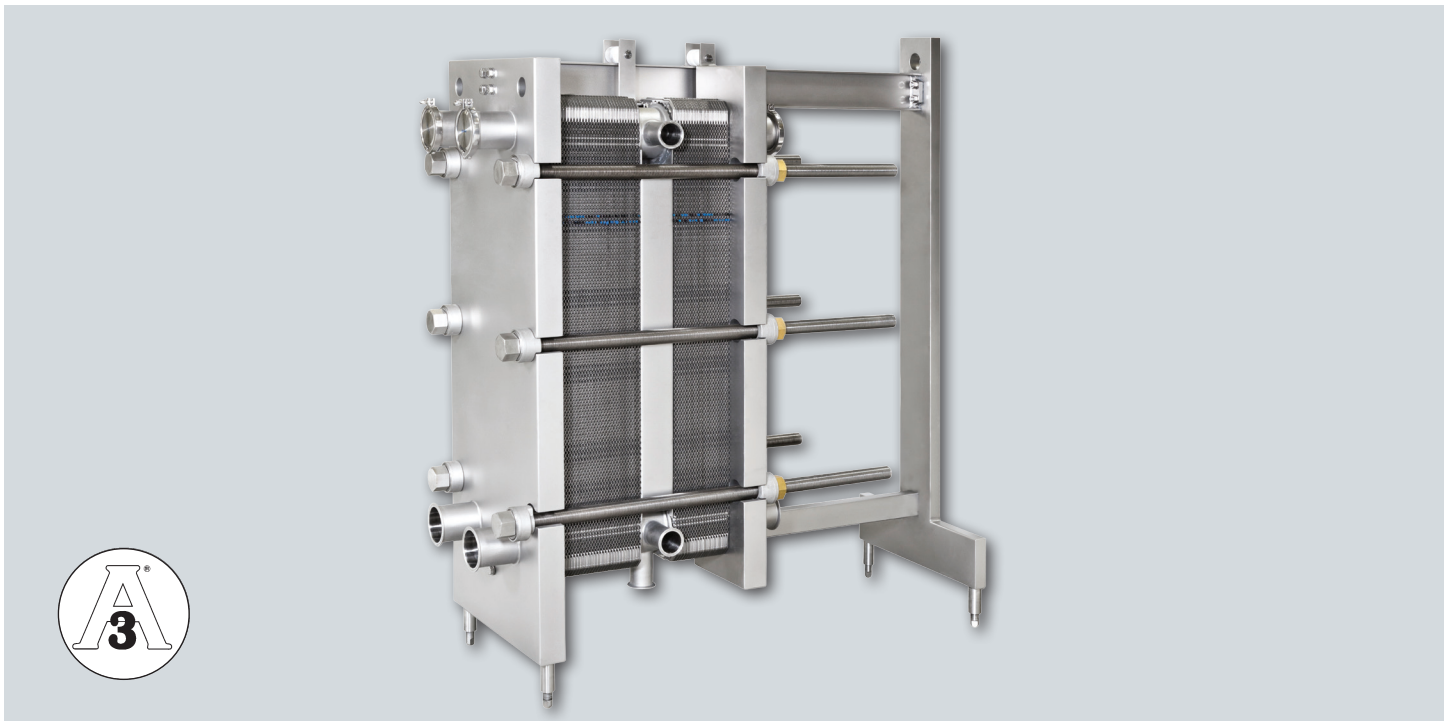


Kelvion



Sanitary Plate Heat Exchangers

NT100 SYBC FRAME



The NT plate is the most technologically advanced heat transfer plate with features for efficient processing of all products, including those with high viscosities and fouling tendencies.

PosLoc™—Heat transfer plates have multiple lead-ins that ensure self-alignment of the plate pack for ease in closing. This feature reduces downtime when servicing the unit.

EcoLoc™—Adhesive-free gasket attachment makes replacement a snap. A special design keeps gaskets in place even after several service cycles.

OptiWave™—Computer-modeled heat transfer area design provides even flow distribution across the entire plate surface, maximizing heat transfer while minimizing fouling rates, plate count, and cost.

The NT100 SYBC is a stainless steel clad frame design with 4" connections that is offered in two heat transfer plate lengths, the NT100M and NT100X. These features allow for optimal design for higher flow rate applications.

NT100 Sanitary Frame Features

- Meets 3-A Sanitary Standards
- Max design pressure 225 psig (15 barg)
- Max flow rate 830 gpm (190 m³/hour)
- Heavy duty cladding with 150 grit blast finish
- 4" tri-clamp connections, 316 stainless steel
- #4 finish on all 8 ports (for restream flexibility)
- Frame lengths for up to 841 plates available
- Grids available for multi-section designs
- ASME code stamp available

NT100 Sanitary Frame: Technical Data

MATERIALS AND CONSTRUCTION:

Frame Lengths: 8 standard lengths for a maximum of 850 plates

Individual Plate Weight: NT00M = 2.74 kg/6.03 lb,
NT100X = 3.595 kg/7.91 lb

Mounting Feet: Adjustable ball foot, + 0.75" (+ 19 mm) total adjustment

Frame Plate Material: Stainless steel cladding on carbon steel core

Frame Surface: 150 grit bead blasted

Upper Beam: 304 stainless steel I-beam

Lower Beam: 304 stainless steel rectangular tube

Tightening Bolt Material: SA-193 B8 stainless steel with C464 Naval Brass Nut

Standard Connections: 4" tri-clamp, 316 stainless steel polished to #4 finish, other connections and materials are available

Grid Connections: 2.5" tri-clamp, 316 stainless steel polished to #4 finish, other materials are available

Grid Thickness: 3.94" (100 mm) equals 28 flow plates

Codes: Meets 3-A sanitary standard. ASME code stamp available

Port Height: Dimensions shown are for standard frames and high leg frame

PERFORMANCE:

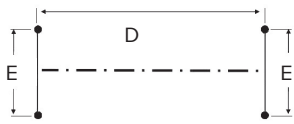
Maximum Standard Design Pressure: 225 psig (15.5 barg)

Maximum Standard Design Temperature: Dependent on gasket selection

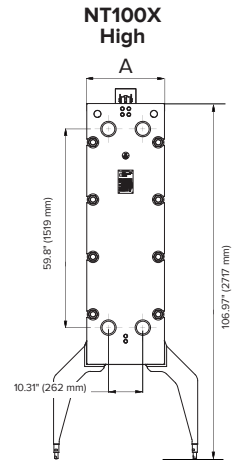
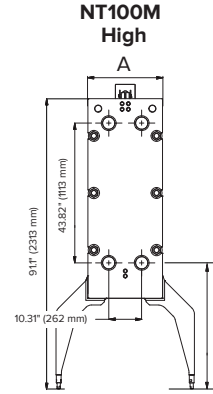
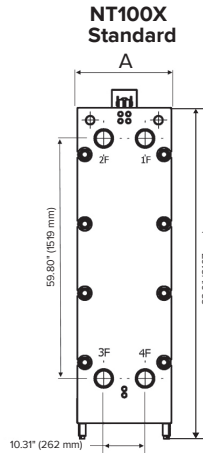
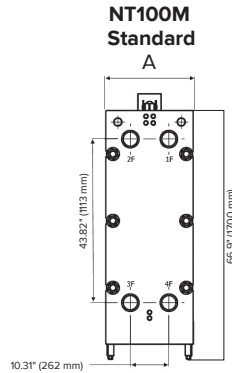
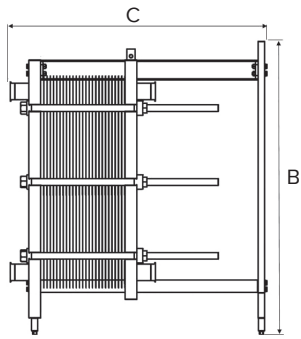
Maximum Standard Flow Rate: 830 gpm (190 m³/hour)

Heat Transfer Plate: 0.6mm, 316L Stainless Steel as standard, Titanium and others are available

Gasket: FDA and 3-A compatible NBR, EPDM, Viton and others are available



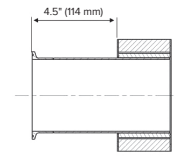
(E)	
Standard Leg	20.67" (525.0 mm)
High Leg	41.73" (1059.9 mm)



Model	Tightening Bolt Qty	Max Plate Count	Max Plate Pack Thickness	Net Weight (no plates)		Grid Thickness	Grid Weight	Pressure Plate Width (A)	Overall Length (C)	Footprint Length (D)
				Standard	High					
NT100M	6	50	6.91"	2598 lbs	2835 lbs	3.94" (equivalent to 28 plates*)	154 lbs	23.4" (594 mm)	38.1"	31.4"
		175	24.40"	2685 lbs	2922 lbs				61.8"	55.0"
		300	41.90"	2795 lbs	3032 lbs				85.4"	78.6"
		426	59.40"	3003 lbs	3240 lbs				109.0"	102.2"
		530	73.98"	3131 lbs	3368 lbs				128.7"	121.9"
		634	88.56"	3235 lbs	3472 lbs				148.4"	141.6"
		738	103.14"	3363 lbs	3600 lbs				168.0"	161.3"
843	117.73"	3443 lbs	3680 lbs	187.7"	181.0"					
NT100X	8	48	6.62"	3300 lbs	3537 lbs	3.94" (equivalent to 28 plates*)	214 lbs	23.4" (594 mm)	38.1"	31.4"
		173	24.11"	3457 lbs	3694 lbs				61.8"	55.0"
		298	41.61"	3549 lbs	3786 lbs				85.4"	78.6"
		423	59.11"	3787 lbs	4024 lbs				109.0"	102.2"
		528	73.69"	3945 lbs	4182 lbs				128.7"	121.9"
		632	88.27"	4071 lbs	4308 lbs				148.4"	141.6"
		736	102.85"	4223 lbs	4460 lbs				168.0"	161.3"
		841	117.43"	4317 lbs	4554 lbs				187.7"	181.0"

*Data is based on 0.6 mm flow plates

Tri-Clamp Connection



The specifications contained in this printing are intended only to serve the non-binding description of our products and services and are not subject to guarantee. Binding specifications, especially pertaining to performance data and suitability for specific operating purposes, are dependent upon the individual circumstances at the operation location and can, therefore, only be made in terms of precise requests.

Kelvion Inc., PHE
100 Gea Drive, York, PA 17406
Phone: 717-268-6200
Fax: 717-268-6162
www.kelvion.com/us

About Kelvion:

Kelvion provides one of the most extensive product portfolios in the heat exchange market worldwide for a wide range of applications. Kelvion manufactures plate, shell and tube, air-cooled heat exchangers, air filter systems, synthetic fillings for numerous areas of application, wet cooling towers and dry cooling systems, as well as air-conditioning facilities. As a result, Kelvion provides reliable and comprehensive coverage of the entire spectrum for heat exchange.

